



ŞAHİNLER YAPI
PROJE SAN. VE TİC.LTD. ŞTİ.



ŞAHİNLER
YAPI PROJE LTD.



Message from the President,



As the Şahinler Family, we started our journey in 1980 with the motto of producing the best and of the highest quality in order to contribute to our country's civil progress, economic power and welfare. This journey does and will continue. Many things have changed since our first day, but the only thing that hasn't changed is our excitement and enthusiasm.

Looking back from today, the countless works that were put forward as a result of our business life of almost half a century long are the source of our pride and elation. With the awareness of our responsibility to our country and future generations, we will continue to produce lasting and qualified works.

As Şahinler Yapı Proje, we live in 1980s in terms of our passion and excitement of the very first day, in 2020s in terms of all our experiences we have gained so far, and in 2050s in terms of our vision for the future.

Yours truly,

Saadettin ŞAHİN



ABOUT US

The step taken in the construction sector by Saadettin ŞAHİN on his own as a young engineer in 1980 constituted the basis of today's ŞAHİNLER YAPI PROJE LTD.ŞTİ. As a legal entity, our company was established in 2004 by three esteemed businessmen, one mechanical engineer, one architect and one civil engineer; and since its inception, it has carried out projects of public and private sector ownership in various branches exceeding 1.5 million square meters. In this context, our company has provided to our country many schools, military facilities, hospitals, roads, junctions, viaduct works in addition to stream improvement and infrastructure projects, and housing areas such as building/housing estates. As a company that has 40 years of experience in the construction sector taking also into account the past of our founder Saadettin Şahin, all of the works we have successfully carried out are a source of strength and motivation for us looking forward.

In parallel with our founder's philosophy of life, honesty, perfectionism, innovation, responsibility, stability and entrepreneurship have been our indispensable business principles since the first day. Şahinler, encourages all of its subcontractors, from their lowest level in hierarchy to their top managements, to commit to continuous development, honesty, and productive work, to adding value to their work, to respecting humanity and nature, and to avoiding wasting national wealth.

The approach of the senior management of our company consisting of Saadettin Şahin, Alihan Şahin and Merthan Şahin is to carry out the activities in full coordination and in transparent communication with headquarters, construction sites, subcontractors and contracting/administrative authorities. In line with this management approach, our Board of Directors, which consists of members each of whom are highly skilled and experienced in their sectors, conducts and manages its intensive workload, through the distribution of this workload on the basis of quality and quantity and in accordance with the members' areas of specialization. The secret to our company's success is hidden in the visionary personalities and vast experiences of the MASTERS that are in the wheelhouse.



OUR VISION MISSION AND GOALS

OUR VISION

is to become a reliable, preferred, global company that operates in all areas of the construction sector ranging from housing to industrial facilities and infrastructure services, with our construction quality, project eligibility and customer-oriented service approach, both in Turkey and abroad.

OUR MISSION

is to provide permanent works that exceed the expectations in terms of architecture and engineering without compromising on the quality, and to develop real estate projects that will leave a mark in aesthetical and functional terms by means of complete project management through developing the best usage model on a land suitable for investment and using the most advanced construction technologies.

OUR GOALS

Our company has been the leading company in the sectors of construction and construction technologies in our country for many years. As the pioneering company for 2 generations, our company has received many awards and quality certificates. Our goal is to carry out international construction works without compromising on our principles and to contribute to our country's position in the international construction sector.

Reliable and preferred ...

Leading company in the international arena...

Without compromising on quality ...



OUR ENVIRONMENTAL POLICY

OUR VALUES POLICY

Customer Satisfaction: The satisfaction of the administrative institutions and organizations that tender the works we carry out, as well as the satisfaction of our customers and stakeholders in relation to the works we carry out for the private sector is the focal point of our activities. Our most basic business principle is to complete and deliver our contracts at the highest quality and speed, within the targeted budget, and on time.

Innovativeness: In addition to its own R&D activities, our company closely follows the construction technology, which develops and changes by the day with new inventions, and applies these developments and changes in the construction and installation work of today's and tomorrow's construction works.

Integrity: In line with the principle of transparent management, we work under the supervision of the relevant auditing and consultancy firms, within the scope of the specified and desired technical construction specifications and the foreseen clauses, in each of our construction projects.

Responsibility: We act with responsibility that prioritizes maximum performance and safety in the structures we construct, as well as with the awareness that our country is located in the risky earthquake zone.

Quality Orientation: With its belief in total quality and with its expert staff, our firm produces projects and provides contracting services in accordance with world standards. In this context, our company has ISO 14001 and ISO 9001 Quality Certificates, as well.

OUR ENVIRONMENTAL POLICY

is:

- to comply with the provisions of the current legislation on environment,
- to search for and use technologies and methods that do not harm the environment,
- to use natural resources as efficiently as possible,
- to preserve the forms of natural structure and all kinds of plant, tree and animal populations that exist within our project application site, or to transfer them to another place under the conduct and administration of the relevant authorities, and
- to raise awareness of all our employees, suppliers and subcontractors on the protection of the environment and national resources.

OUR OHS POLICY

is:

- to provide continuous improvement by improving the occupational health and safety management system we have established together with the OHS consulting firms that we receive consultancy support,
- to have all our employees adopt the understanding of occupational health and safety, and to ensure the active participation of our employees in our preventive activities in related matters,
- to ensure that our employees receive the necessary trainings on occupational health and safety issues and take the necessary security measures,
- to act in coordination with our partner OHS companies, in order to integrate our ongoing construction sites into our occupational health and safety management system applications, to fulfill the requirements of OHS legislation and other relevant legislation, and to ensure that subcontractors that are our solution partners, comply with the occupational health and safety management system, as is the case with our own employees.



OUR VALUES POLICY

CUSTOMER SATISFACTION

Satisfaction of our customers, government agencies and society is the focus of all our activities. We complete and deliver our contracts in the highest quality, within the targeted budget, and on time.

INNOVATIVENESS

Construction technology is changing every day with new inventions, hence our goal is to build the facilities of today and tomorrow in accordance with these changes.

INTEGRITY

Our understanding of integrity is to carry out and deliver each construction project in accordance with the specified time and conditions, in line with the principle of transparent management.

RESPONSIBILITY

Our understanding of responsibility is to deliver practically the most successful examples in practice, in this sector, which produces lasting values, by constructing buildings and facilities that are as efficient as their first day, and also taking into consideration the sensitivity of our country due to being located in the earthquake zone.

QUALITY ORIENTATION

Our understanding of quality is to provide timely, error-free, economical and reliable service with its expert staff, through adoption of flawless execution as the principle, in accordance with world standards, without compromising on the service quality in the sector.

Customer Satisfaction

Innovativeness

Integrity

Responsibility

Quality Orientation



SUPERSTRUCTURE PROJECTS



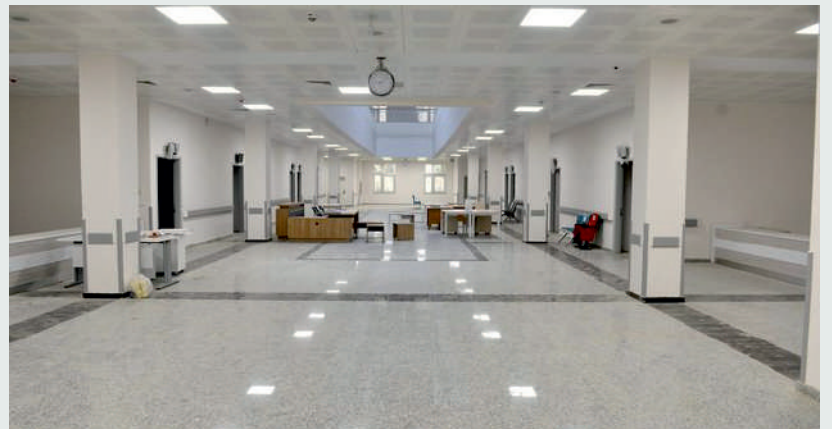
T.R. MINISTRY OF HEALTH
ISTANBUL HEALTH DIRECTORATE
SANCAKTEPE MARTYR PROF. DR. İLHAN VARANK
TRAINING AND RESEARCH HOSPITAL



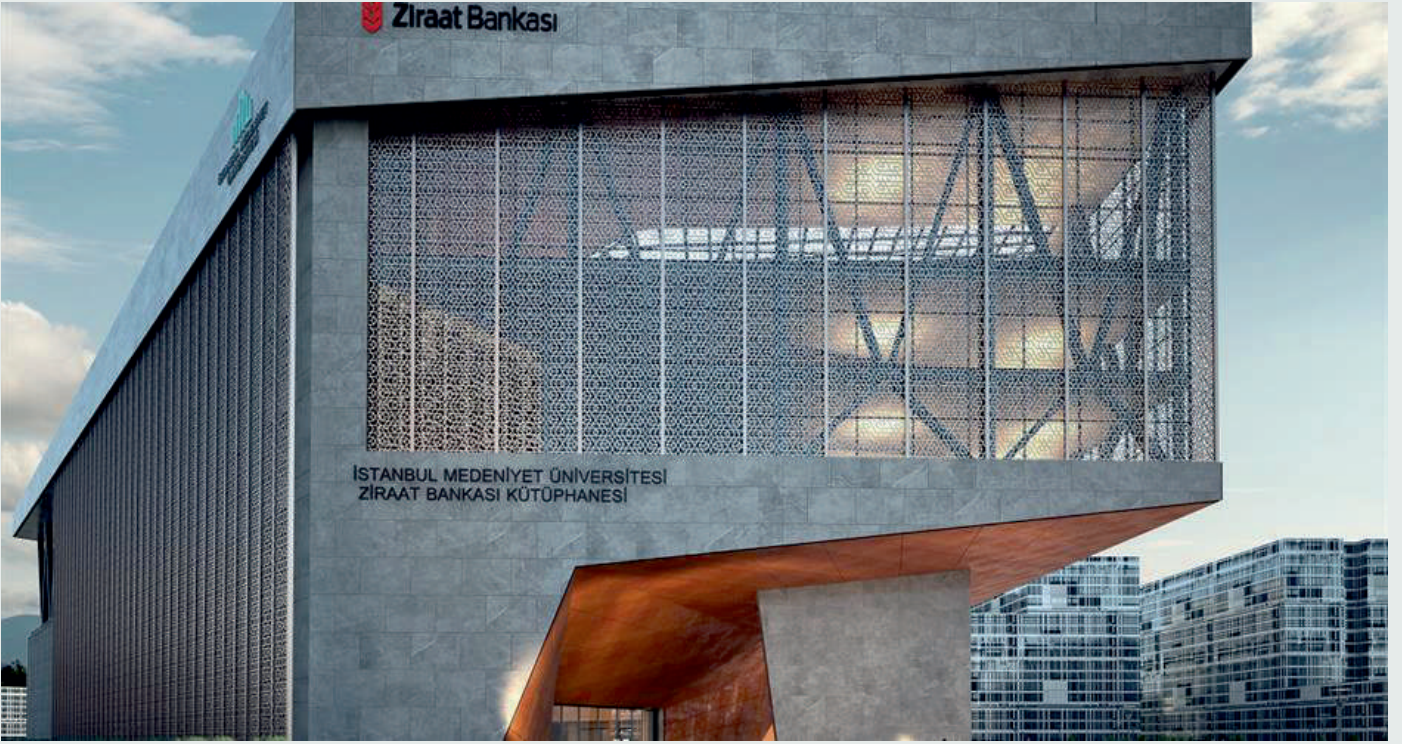
Land Area: 35.000 m²

Construction Area: 80.000 m²

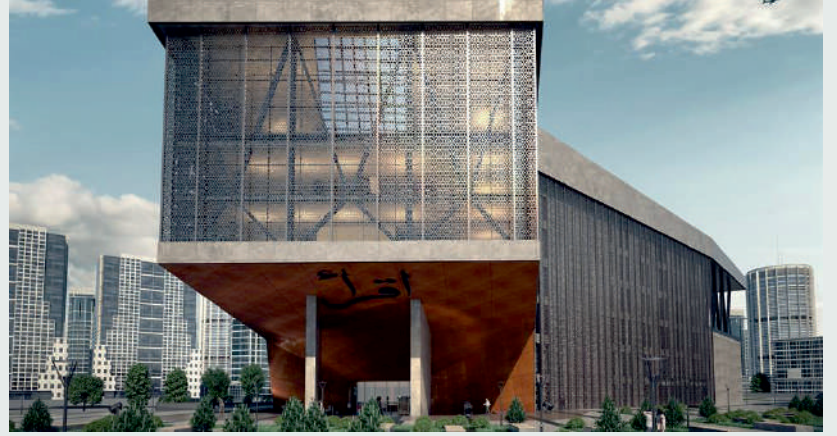
Social Facilities:
400 bed capacity, 10 operating rooms,
21 outpatient yclinics in different areas,
indoor car park with 170 car capacity,
outdoor car park with 280 car capacity.







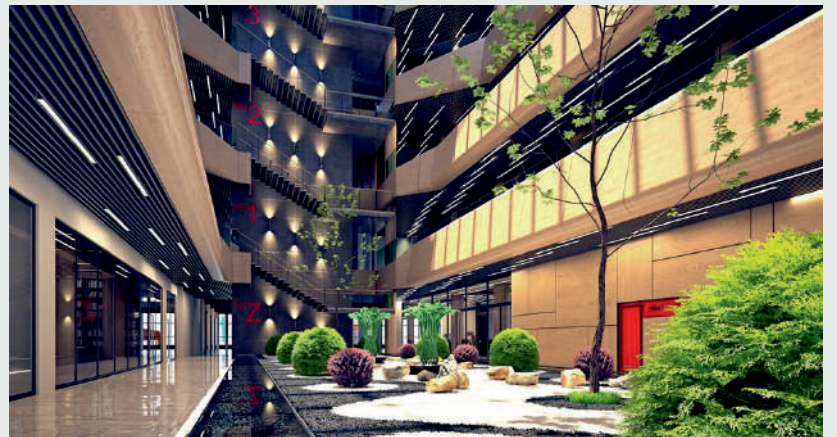
İSTANBUL MEDENİYET UNIVERSITY
ZİRAAT BANK LIBRARY

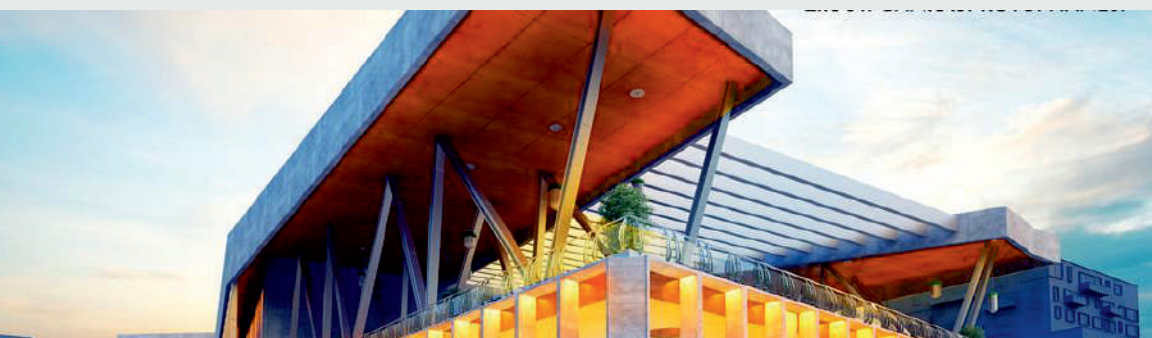
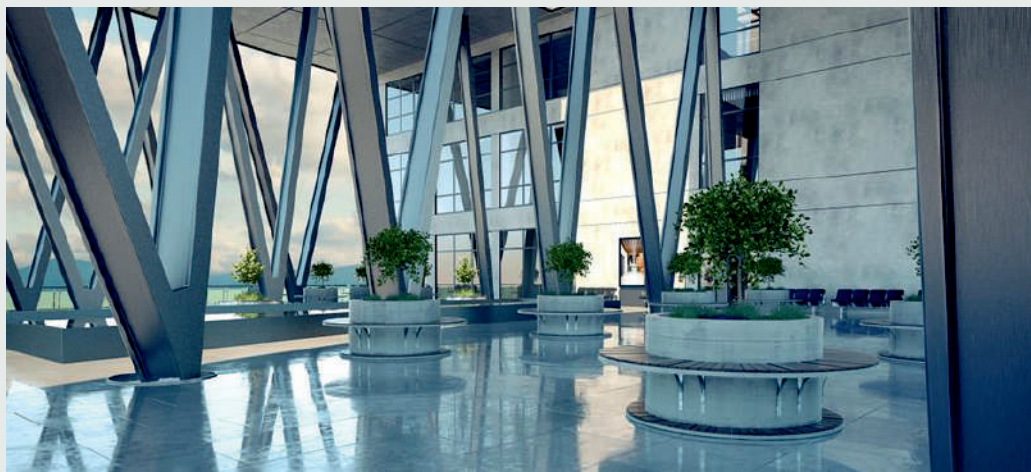


Land Area: 6.000 m²

Construction Area: 28.000 m²

Social Facilities:
Library with a Capacity of One Million Books,
and Student Social Areas







ISTANBUL / BAKIRKOY

ISLAMIC DIVINITY

ANATOLIAN HIGH SCHOOL

Land Area: 11.000 m²

Construction Area: 13.000 m²

T.R. Istanbul Governorship
(IPKB/ISMEP) Project





ISTANBUL / KUCUKCUKMECE
MUNIS FAIK OZANSOY
PRIMARY AND MIDDLE SCHOOL

Land Area: 6.000 m²

Construction Area: 12.000 m²

T.R. Istanbul Governorship
(IPKB/ISMEP) Project





İSTANBUL / KADIKÖY / KALAMIŞ
NURETTİN TEKSAN MIDDLE SCHOOL

Land Area: 6.500 m²

Construction Area: 11.000 m²

T.R. Istanbul Governorship
(IPKB/ISMEP) Project







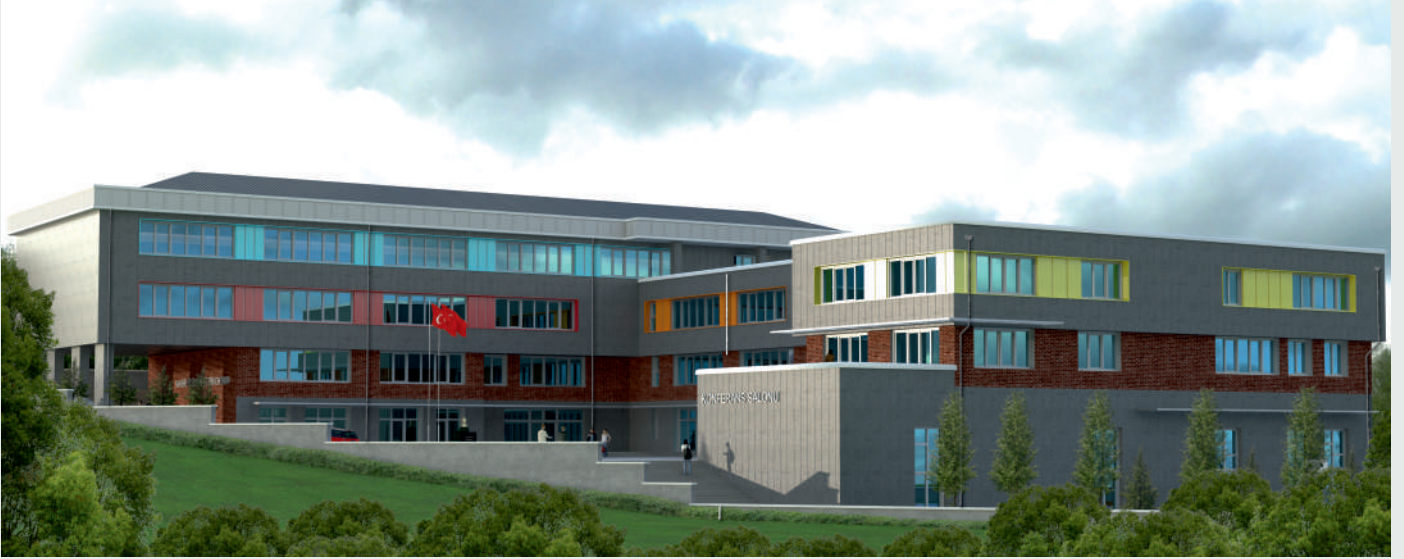
ISTANBUL / KADIKOY / FENERYOLU
GIRLS PRACTICAL SCHOOL OF ARTS

Land Area: 2.400 m²

Construction Area: 3.800 m²

T.R. Istanbul Governorship
(IPKB/ISMEP) Project





ISTANBUL/PENDİK

MAHIR İZ PRIMARY SCHOOL

Land Area: 5.500 m²

Construction Area: 8.700 m²

T.R. Istanbul Governorship
(IPKB/ISMEP) Project





ISTANBUL / PENDIK / KURTKOY

OMER CAM ISLAMIC DIVINITY ANATOLIAN HIGH SCHOOL
AND DORMITORY - LANGUAGE EDUCATION CENTER

Land Area: 33.00 m²

Construction Area: 27.000 m²

Social Facilities: Classrooms, gyms, recreational areas, playgrounds, multi-purpose classrooms, indoor and outdoor otapark, dormitory building.





ISTANBUL / USKUDAR

TENZİLE ERDOĞAN

GIRLS ISLAMIC DIVINITY ANATOLIAN HIGH SCHOOL



Land Area: 20.00 m²

Construction Area: 25.000 m²

Outdoor Construction Area: 40.000 m²

Social Facilities: Classroom buildings, masjid, sports fields, green areas, recreational areas.



ISTANBUL/PENDIK

NURI DEMIRAG

MULTI-PROGRAM ANATOLIAN HIGH SCHOOL

Land Area: 14.200 m²

Construction Area: 12.500 m²

T.R. Istanbul Governorship
(YIKOB) Project





ISTANBUL/PENDİK

SULE YUKSEL SENLER

GIRLS ISLAMIC DIVINITY ANATOLIAN HIGH SCHOOL

Land Area: 9.500 m²

Construction Area: 11.000 m²

Social Facilities: 41 Classrooms,
3 laboratories, 1 conference room,
1 gym, 1 library and 1 workshop.





ISTANBUL / SANCAKTEPE
SAFA PRIMARY SCHOOL



ISTANBUL/ATASEHIR
NURI CINGILIOGLU
TECHNICAL AND
VOCATIONAL HIGH SCHOOL



ISTANBUL / ATASEHIR
ATA PRIMARY SCHOOL



ISTANBUL/ATASEHIR
TEB ATASEHIR PRIMARY SCHOOL





INFRASTRUCTURE PROJECTS



ERZURUM / PALANDOKEN
SKI RUNS AND ARTIFICIAL SNOW FACILITY PROJECT

Land Area: 50.000 m²

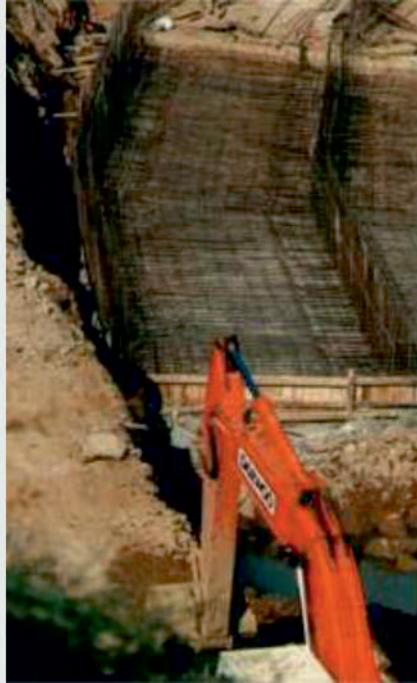
Construction Area: 22.000 m²



ISTANBUL / TUZLA
COLLECTOR LINE AND RAIN WATER
CHANNEL CONSTRUCTION

ISTANBUL / BOSTANCI
ÇAMAŞIRCI STREAM
IMPROVEMENT AND
COLLECTOR WORK





ISTANBUL / KADIKOY
COLLECTOR LINE AND RAIN WATER
CHANNEL CONSTRUCTION WORK - I



ISTANBUL / KADIKOY

COLLECTOR LINE AND RAIN WATER
CHANNEL CONSTRUCTION WORK - 2



HOUSING PROJECTS



FUTURE PROJECTS I

Istanbul /Kadikoy
Housing Estate Project

Land Area: 12.000 m²

Construction Area: 37.000 m²

Social Facilities: Residence Project



FUTURE PROJECTS 2

Istanbul /Kadıkoy
Prof. Cengiz Topel Project

Land Area: 2.800 m²

Social Facilities: Residence Project





FUTURE PROJECTS 3

Istanbul /Kadıkoy
Hamiyet Yuceses Project

Land Area: 3.200 m²

Social Facilities: Residence Project



OUR SUPERSTRUCTURE WORKS



- 1- Istanbul / Uskudar Tenzile Erdogan Girls Islamic Divinity Anatolian High School
- 2- Istanbul Beykoz Culture and Sports Complex
- 3- Martyr Prof. Dr. İlhan Varank Sancaktepe Training and Research Hospital
- 4- Istanbul Pendik In-service Training Institute and Evening School of Arts
- 5- Istanbul/Pendik Sule Yuksel Senler Girls Islamic Divinity Anatolian High School
- 6- Istanbul Sancaktepe Safa Primary School
- 7- Istanbul/Atasehir Nuri Cingillioğlu Technical and Vocational High School
- 8- Istanbul Atasehir Ata Primary School
- 9- Istanbul T.E.B. Atasehir Middle School
- 10- İzmir Foça Coast: Construction of 40 Flats
- 11- Antalya Belek / Serik: Construction of 242 Duplex Villas
- 12- Erzurum Palandöken Ski Area Ski-Run and Artificial Snow Facility Construction Work
- 13- Istanbul Pendik Gullubaglar Technical and Industrial Vocational High School Construction Work
- 14- Istanbul Sancaktepe Training and Research Hospital Renovation and Construction Work
- 15- Istanbul Bakirkoy Islamic Divinity Anatolian High School and Islamic Divinity Middle School Construction Work
- 16- Kuşukcekmece Munis Faik Ozansoy Middle School and Munis Faik Ozansoy Primary School
- 17- Feneryolu Girls Practical School of Arts
- 18- Kalamis Nurettin Teksen Middle School
- 19- Istanbul Medeniyet University Ziraat Bank Library Service Building
- 20- Pendik Mahir İz Primary School



OUR INFRASTRUCTURE WORKS

- 1- Istanbul Bakirkoy Municipality, Kocasinan / Istanbul, 6th Section Road and Canal Construction
- 2- Istanbul Bakirkoy Municipality, Gungoren / Istanbul, 4th Section Road and Canal Construction
- 3- Istanbul Kucukcekmece Municipality, Kocasinan / Istanbul, 10th Section Road and Canal Construction
- 4- Istanbul Kucukcekmece Municipality, Sefaköy / Istanbul Gültepe Neighbourhood,
Stormwater Channel Construction (1st Stage)
- 5- Istanbul Kucukcekmece Municipality, Avcılar/ Istanbul, Curbing and Sidewalk Construction
- 6- Istanbul Kucukcekmece Municipality, Sefaköy / Istanbul Gültepe Neighbourhood,
Stormwater Channel Construction (2nd Stage)
- 7- Istanbul Camasırcı Stream Improvement and Correction of Deficiencies
- 8- Istanbul Kadıkoy Municipality Merdivenkoy Neighbourhood Cesme,
Steam and Batman Streets Stormwater Channel, Gully and Manhole Cover Construction
- 9- Stream Improvement and Correction of Deficiencies Across Istanbul Maltepe District
- 10- Istanbul Tuzla Municipality Stormwater Channel Construction (1st and 2nd Stages)
- 11- Istanbul Sancaktepe District Safa Neighbourhood Fatih Street Stormwater Channel Construction
- 12- Besiktepe Movement Area Housing Facility (H.A.I.T.) Garrison Construction
- 13- Hadımky / Istanbul, Officer's Club Social Facilities Construction
- 14- Edirne, 20.000 Capacity Bakehouse Construction



OUR REFERENCE







Bağdat Cad. Yeşilbahar Sok. No:1-6 Çiftehavuzlar - Kadıköy / İstanbul

Tel: (0216) 478 13 28 Faks: (0216) 411 93 02

Web: www.sahinleryaproje.com

E-mail: info@sahinleryaproje.com